

# Instruction Sheet

Follow these instructions to install a Cooling fan/shroud on a Jabil Common Controller.

**Subject: 8263755 Jabil Common Controller Cooling Fan/Shroud Kit Installation Instructions**

**Models affected: Jabil Common Controller Touch Screen Fryers**

1. Disconnect the fryer from the electrical power supply. On electrical fryers, the individual fryer can be switched off with the switch next to the fuses inside the door (see Figure 1).



Figure 1

2. Remove the acorn nuts, washer and plates on both ends of the guard if applicable (see Figure 2) and discard.
3. Slide one end of the guard up the rail at an angle until it can be removed if applicable (see Figure 3) and discard.
4. Remove the two Phillips head screws from the upper left and right corners of the controller (see Figure 4).
5. Slide the controller up to disengage it from the bezel (see Figure 5).
6. Lift the controller out from the bezel (see Figure 6).
7. Lower the controller and rest it on the bottom of the control box (see Figure 7). The black tether on the right will support the controller.
8. Disconnect the RJ45 cable from the SIB board **FIRST** (see Figure 8).

In This Kit		
Part #	Description	Qty
130000437	STUD ASSY, FQ4K SERVICE UI	1
130151658	COVER, JABIL UI W/FAN	1
130011822	BRACKET, CONVECTION FAN	1
130000436	FAN, 5VDC USB 40MMX10MM	1
130009402	SCREW, #8 X 1/4 BRITTLE PLASTIC	1
8090250	8-32 KEPS NUT ZC	4
W15C578	WIRE 15C 03 8.0 15 36	1
8090364	SCREW, #8X5/8 HX WSHR HD ZP	8
130212267	LOUVER PLASTIC UI COOLING	1
8090328	SCREW, 4-40 X 1/4	3
8197999	FAN/SHROUD KIT INSTRUCTIONS	1

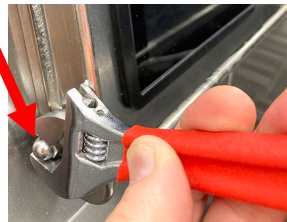


Figure 2



Figure 3



Figure 4



Figure 5

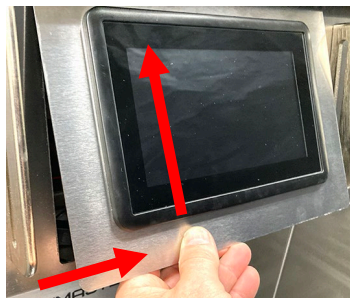


Figure 6

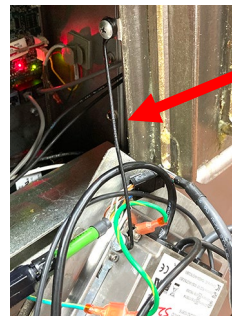


Figure 7

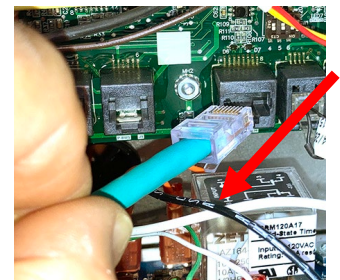


Figure 8



9. Disconnect the ground cable and the speaker cable and the USB cable (if applicable) (see Figure 9).

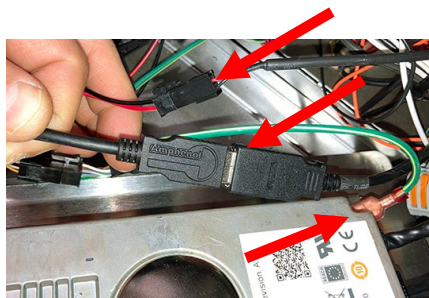


Figure 9

10. Disconnect the lanyard tether from the frame (see Figure 10) to remove the controller.

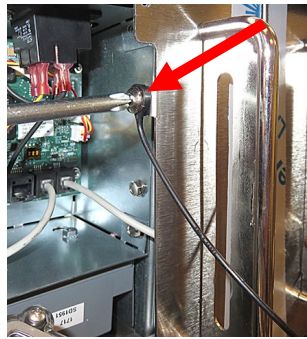


Figure 10



Figure 11

11. If installing in an electric fryer bend the speaker down towards the rear of the component

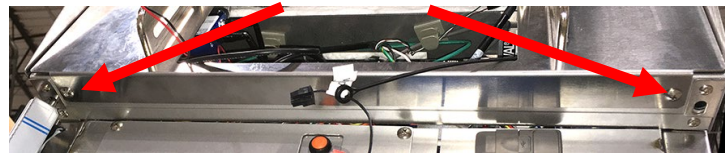


Figure 12

box (see Figure 11) and skip to step 20.

12. If installing in a gas fryer, remove the bezel by removing the two screws on the bottom of the bezel (see Figure 12) and tilting the bezel up from the bottom and lowering towards the front of the fryer (see Figure 13).

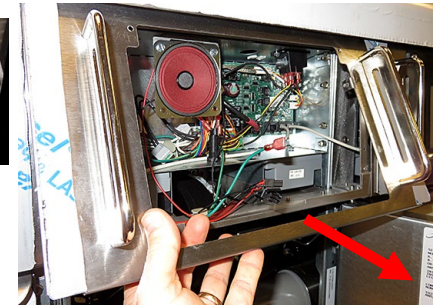


Figure 13

13. The speaker bracket and relay(s) will need to be relocated to allow room for the cooling shroud (see Figure 14).

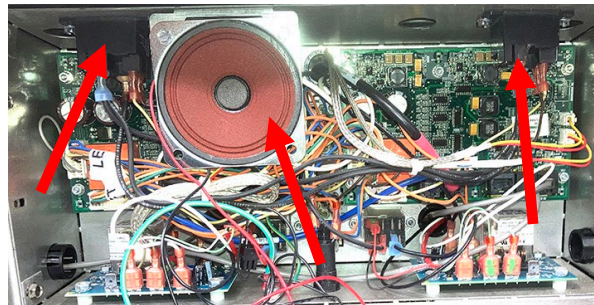


Figure 14

14. Remove the two (2) screws attaching the speaker to the bracket (see Figure 15).

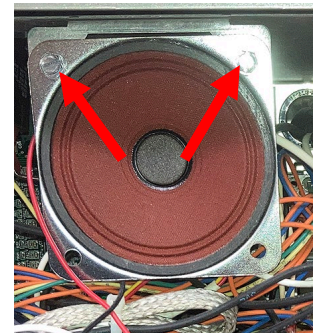


Figure 15

15. Remove the two (2) screws attaching the speaker bracket to the component box (see Figure 16).

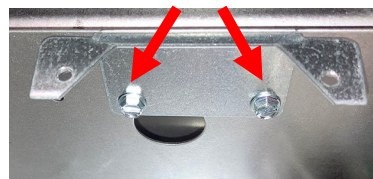


Figure 16

16. Reattach the speaker to the bracket (see Figure 17).



Figure 17

17. Rotate the speaker 180 degrees so the speaker is facing the rear of the component box and reattach the bracket to the component box using the screws and the existing holes (see Figure 18).

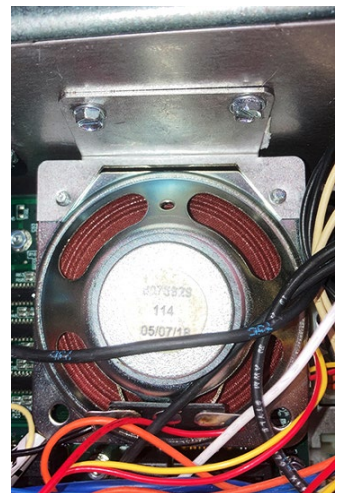


Figure 18

18. Remove the two (2) screws attaching the relay to the top of the component box (see Figure 19).

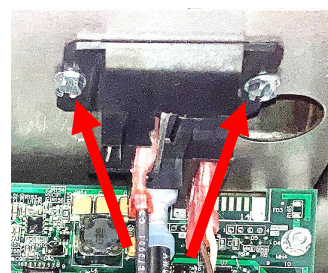


Figure 19

19. Using supplied drill point screws to relocate the relay about one (1) inch behind its existing position (holes), toward the rear of the box as shown (see Figure 20).

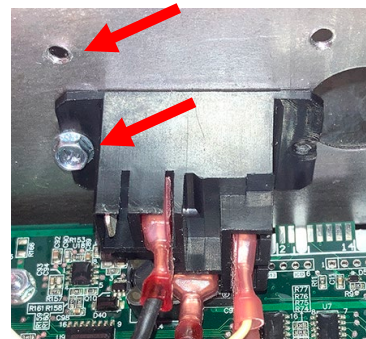


Figure 20

20. Relocate the controller to a flat surface away from the fryer to attach the cooling shroud.



21. Disconnect the lanyard from the existing bezel and set aside for reassembly (see Figure 21).
22. Using a T15 Torx driver, remove the eight (8) screws attaching the controller frame to the bezel (see Figure 22). Set aside for reassembly.
23. Lift and remove the controller frame from the bezel (see Figure 23).
24. Lift and remove the bezel from the controller (see Figure 24).
25. Discard the bezel removed in the previous step.

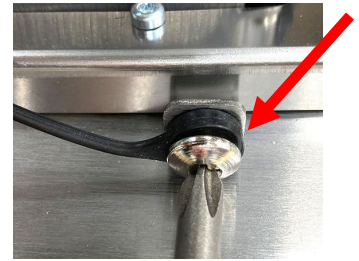


Figure 21

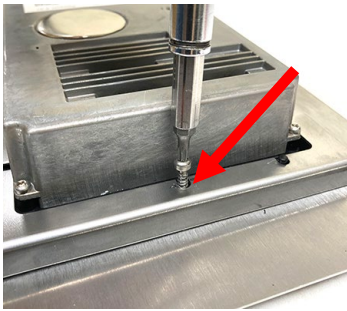


Figure 22



Figure 23



Figure 24

26. Orient the controller with the cables to the left. With the studs facing up, the mounting holes away from you and the vent opening towards you, orient the new bezel as shown. Route the cables through the bezel and lower onto the controller (see Figure 25). Ensure the bezel is laying flat on the lip of the controller.



Figure 25



Figure 26

27. Route the cables through the controller mounting frame that was removed in step 23 and mount on rear of controller (see Figure 26).

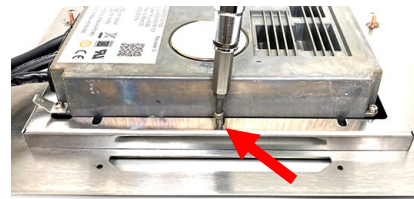


Figure 27

28. Attach the controller mounting frame to the controller using the screws removed in step 22 (see Figure 27).



Figure 28

29. Attach supplied ground wire to the ground lug on the controller (see Figure 28).



Figure 29

30. Flip the controller over to the touch screen side of the controller and insert the louver into the opening, ensuring the top tab is inserted at an angle into the opening and placed under the metal (see Figure 29 and 30).

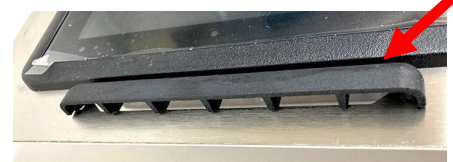


Figure 30

31. Carefully flip the controller over and attach the louver to the metal using the supplied two screws (see Figure 31 and 32).



Figure 31



Figure 32

32. Orient and place the micro-fan on top of the cooling shroud as shown with the label facing up (see Figure 33).
33. Insert the two (2) tabs of the mounting bracket into the rear mounting slots on top of the fan (see Figure 34).
34. Attach the fan mounting bracket with supplied screw (see Figure 35).
35. Align the slots of the cooling shroud with the cables (see Figure 36).
36. Insert the two (2) cables on the upper side of the controller in the top slot and the other four (4) cables in the lower slot while gently lowering the cooling shroud over the studs (see Figure 37).
37. Attach the lanyard removed in step 21 to the top right corner of the cooling shroud with the supplied nut (see Figure 38).
38. Attach the other three corner studs using the supplied nuts.
39. Attach the cooling fan USB connection to the USB port of the controller that **DOES NOT** have the heat shrink sleeve on the cable (see Figure 39). The other USB (with heat shrink sleeve) is used to connect to the USB extension in the far-left fryer position (see Figure 40) and should **NOT** be used with the fan.



Figure 33

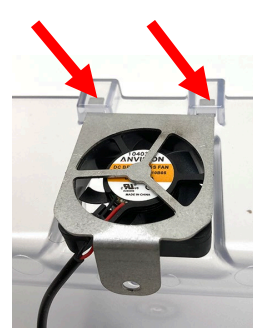


Figure 34



Figure 35

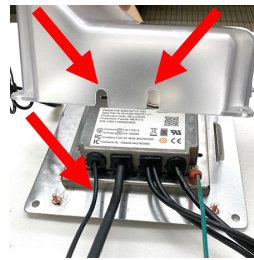


Figure 36

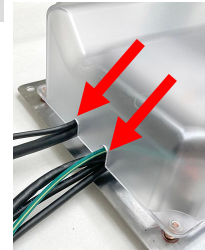


Figure 37



Figure 38



Figure 39



Figure 40

40. Reattach the controller to the fryer ensuring the lanyard is connected **FIRST** (see Figure 41).
41. Attach the speaker wire, the ground wire and the USB with the sleeve to the USB extension if in the far-left position on the fryer (see Figure 42).
42. Attach the RJ45 cable to the SIB board (see Figure 43).
43. Wait a minute or more to ensure the fan is functioning.
44. Attach the controller to the bezel reversing steps 4, 5 and 6. Attach using the two (2) screws removed in step 4.



Figure 41

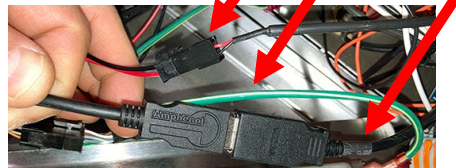


Figure 42

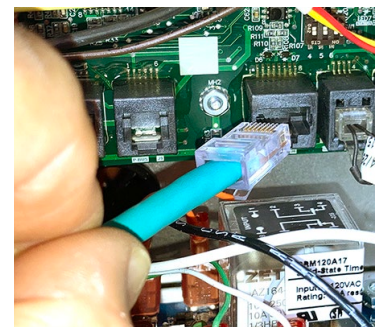


Figure 43